



Blast Valve Type RV 50



Overview

The Blast Valve **RV 50** is a heavy duty blast valve which is intended to be installed into pipes. The **RV 50** protects the pipes from penetration of blast waves caused by outside explosions. It withstands blast waves of 60 bar (842 psi) reflected pressure. This valve is designed to comply with the applicable Singaporean, Swiss and Finnish Standards.

Description

The Blast Valve **RV 50** is a heavy duty double action valve which protects against explosive and implosive waves. This valve is resistant against high and low temperature and high shock loads. Since it is produced from stainless steel it is very resistant against corrosion.

Usage

- Has to be installed at Pipes which enter blast protected shelter
- Protects the shelter against blast and vacuum waves after having been correctly installed



Collective Protection Inc.

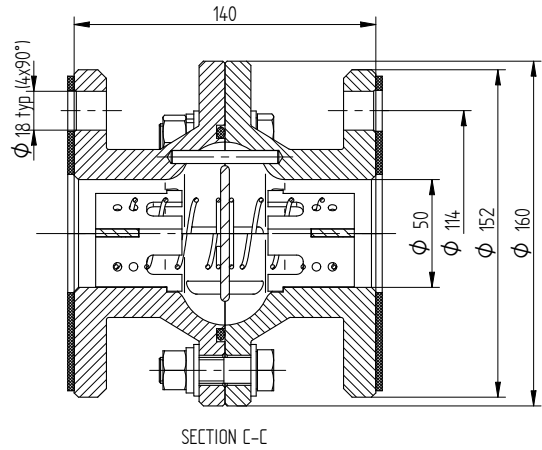
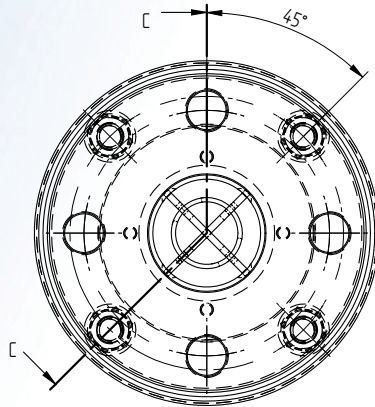
4641 Montgomery Ave.
Suite 200, Bethesda
MD 20814, USA

Tel.: +1 (443) 709-0575
Fax: +1 (443) 709-0578

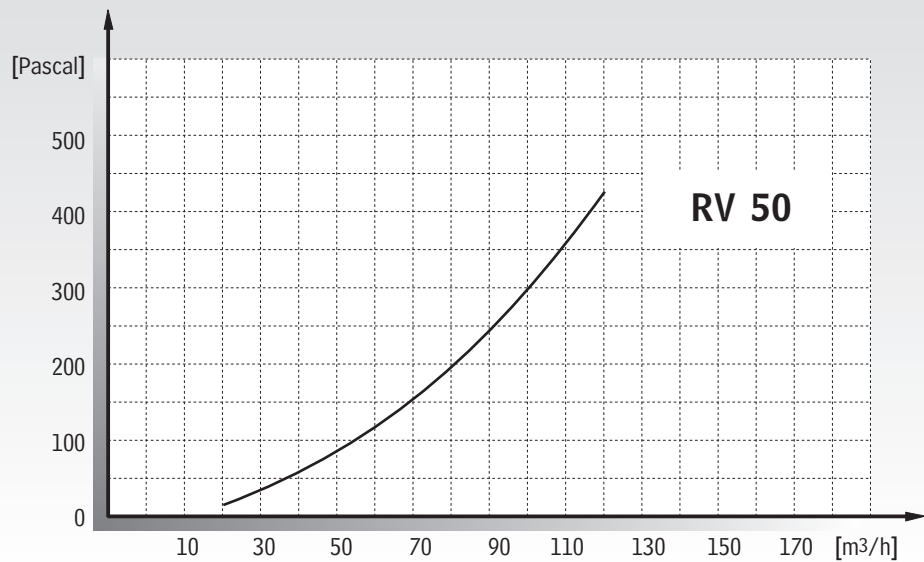


Certifications:

- Quality Control according to ISO 9001
- Quality Assurance according AQAP 2110
- Environmental tests: MIL-STD 810 D



Pressure Drop on Airflow RV 50:



Specifications are subject to change without prior notice

Specifications RV 50:

Product no.:	B00205	
Outer diameter:	165 (6.5)	mm (inch)
Length:	140 (5.5)	mm (inch)
Pressure durability:	4000 (560)	kPa (psi)
Working temperature:	-15 to +70 (+5 to +160)	°C (°F)
Mechanical shock resistance:	60	g
Total weight:	11.0 kg (24.0 lbs)	kg (lbs)



Collective Protection Inc.
 4641 Montgomery Ave.
 Suite 200, Bethesda
 MD 20814, USA
 Tel.: +1 (443) 709-0575
 Fax: +1 (443) 709-0578